

Images of RS16 (Potato-scraping) residues

using Leica MZ16 and MZFLIII stereomicroscopes; all are extended depth of focus

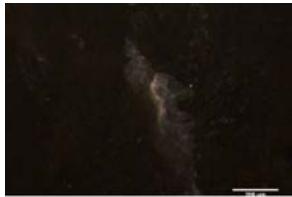
The key to the images is at the beginning of the document.

The images published in this pdf are those that were used in the training portion of the experiment reported in Monnier et al. 2012, *J. Arch. Sci.* For questions, please contact Gilliane Monnier at monni003@umn.edu.

Naming conventions: 'RS' = Residue Study; 'D' = Dorsal side; 'V' = Ventral side; 'a', 'b', etc. = residue label; '25', '50', '115' = magnification used



RS16D_a_1_comp.tif



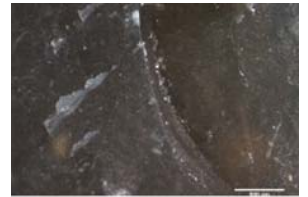
RS16D_a_115_composit.tif



RS16D_b_115_comp.tif



RS16D_c_25_comp.tif



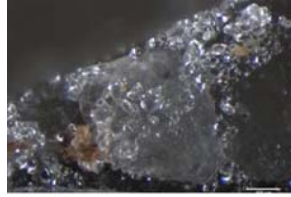
RS16D_d_50_comp.tif



RS16D_e_25_comp.tif



RS16D_e_115_comp.tif



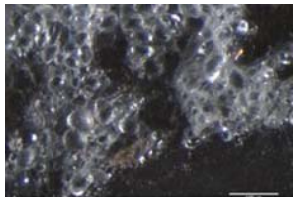
RS16D_e_comp.tif



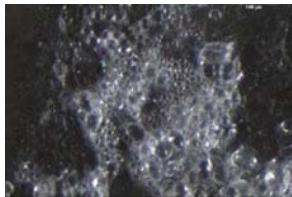
RS16D_f_1_comp.tif



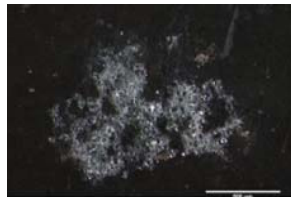
RS16D_f_115_comp.tif



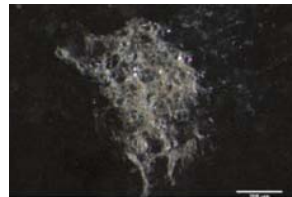
RS16D_g_1_comp.tif



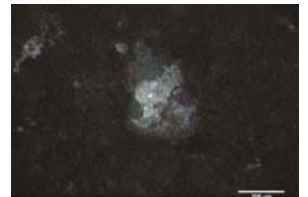
RS16D_g_2_comp.tif



RS16D_g_75_comp.tif



RS16V_a_115_comp.tif



16V_b_115_composite_scaled.tif

